

# It's Cliched To Be Cynical At Christmas

Alto

Half Man Half Biscuit  
arr. Li Mills

♩ = 70

INTRO

*p* Oo oo oo. Oo oo oo. *mp* Now

9 VERSE 1

how did I guess you were going to express your disdain at the crane with the

bright fair-y lights? And you moan at the snow, 'cos your car would-n't go. Oh it's

21 CHORUS

clich-ed to be cyn-i-cal at Christ-mas.

27 5 VERSE 2

You don't have a tree and your smile has a fee. All the

same, here's a card for your boring facade. Jingle bells, piney smells. All the

43 CHORUS

boys and the girls say it's clich-ed to be cyn-ical at

Christ-mas. Oh it's cliched to be

cyn ical at Christ mas.

61 INST.

12

73 VERSE 3



See how we yawn at your bile and your scorn. It's a beau - ti ful day. Peace on

79



Earth has been played. Make a noise with your toys and ignore the kill-

84 CHORUS



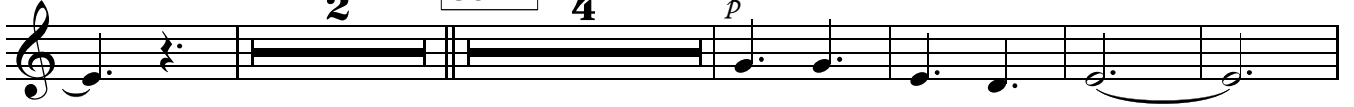
joys 'cos it's clich ed to be cyn ical at Christ mas.

91



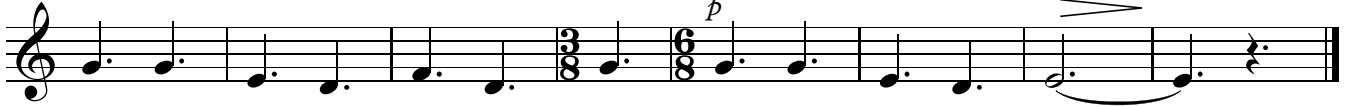
Oh it's clich ed to be cyn ical at Christ mas.

98



Oo. Oo.

109



Oo. Oo. Oo.