

It's Cliched To Be Cynical At Christmas

Bass

Half Man Half Biscuit
arr. Li Mills

$\text{♩} = 70$

INTRO

p



Oo oo oo.....

Now

9 VERSE 1



how did I guess you were going to express your disdain at the crane with the

15



bright fairy lights? And you moan at the snow, 'cos your car would-n't go. Oh it's

21

CHORUS



cli- ched to be cyn-i- cal at Christ- mas.

27

5

VERSE 2



You don't have a tree and your smile has a fee. All the

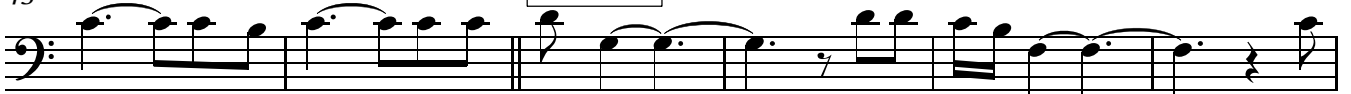
37



same, here's a card for your boring facade. Jingle bells, piney smells. All the

43

CHORUS



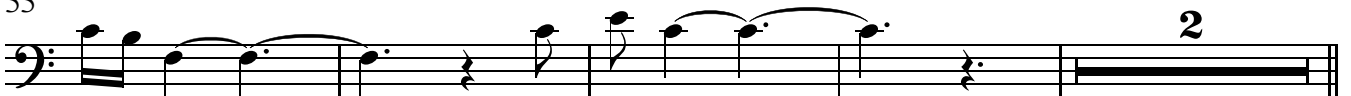
boys and the girls say it's cli- ched to be cyn-i- cal at

49



Christ- mas. Oh it's cliched to be

55

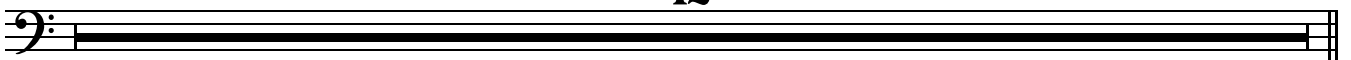


cyn-i- cal at Christmas.

61

INST.

12



Bass

73 **VERSE 3**

See how we yawn at your bile and your scorn. It's a beau - ti ful day. Peace on

79

Earth has been played. Make a noise with your toys and ig - nore the kill-

84 **CHORUS**

joys 'cos it's clich ed to be cyn ical at Christ mas.

91

Oh it's clich ed to be cyn ical at Christ mas.

98 **CODA**

Oo. Oo.

109 *molto rit.*

Oo. Oo. Oo.